



£1,375,000 Freehold  
BEACONSFIELD ROAD, EALING, W5 5JE





## A VERY STYLISH AND MODERN FOUR-BEDROOM FAMILY HOME MOMENTS FROM LAMMAS AND WALPOLE PARKS

Beaconsfield is a popular residential street conveniently tucked away just off St Mary's Road being within easy reach of the Ealing Broadway Town Centre with its busy shops and restaurants, local coffee shops and pubs all close at hand.

For the commuter the area benefits from its new Elizabeth Line (Crossrail Station) plus underground connections (Central and District Lines) alongside the Piccadilly Line at South Ealing.

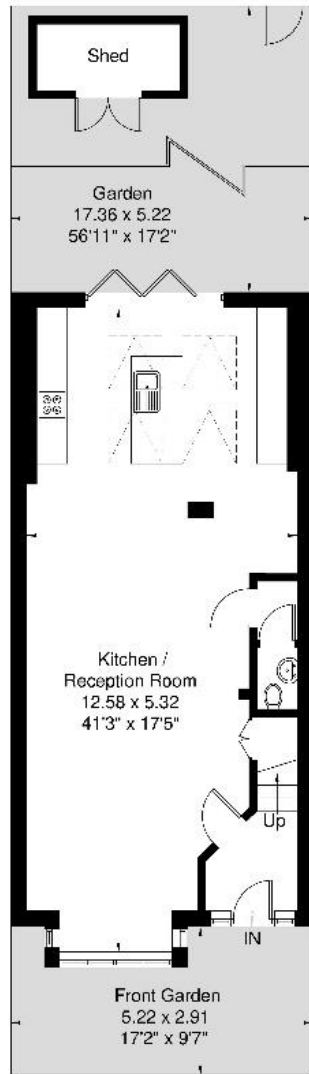
This delightful and spacious Edwardian town house comes with a roomy open plan living / dining / extended family kitchen. Four bedrooms. Two bathrooms. Gas central heating. Beautiful landscaped garden and garden store shed with rear access.

**COUNCIL TAX BAND: F**

**EPC Rating: D**



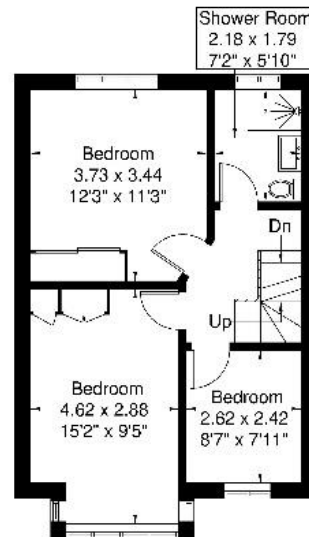
[www.sintonandrews.com](http://www.sintonandrews.com)  
020 8566 1990



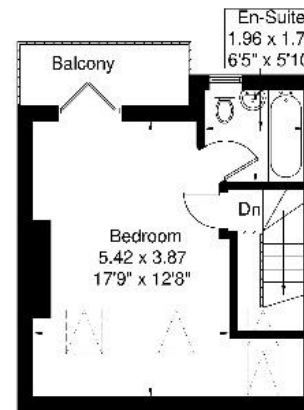
**Ground Floor**  
64.3 sq m / 692 sq ft

## Beaconsfield Road

Approximate Gross Internal Area = 136.6 sq m / 1469 sq ft  
(Excluding Shed)



**First Floor**  
42.5 sq m / 457 sq ft



**Second Floor**  
29.8 sq m / 320 sq ft

Although every attempt has been made to ensure accuracy, all measurements are approximate. The floorplan is for illustrative purposes only and not to scale.  
© www.perspective.co.uk

020 8566 1990

8 Spring Bridge Road, Ealing, London W5 2AA

SINTONANDREWS.COM

