



RALEIGH COURT

Raleigh Court
Kent Avenue |
London | W13

VIA Properties are pleased to present this two-bedroom ground floor apartment located in West London

Leasehold - 999 years from 24th June 1964 | Residents parking | Ground floor | Two double bedrooms | Short walk to West Ealing station

Offers in excess of £475,000 | Leasehold

VIA Properties are pleased to present this two-bedroom ground floor apartment located in West London

THE PROPERTY COMPRISES OF:

- Large living room
- Fully tiled kitchen
- Two bedrooms, both with built in wardrobes
- Bathroom with walk in shower
- Gas central heating
- Residents parking

THE LOCATION:

Located moments away from Pitshanger Lane offering a vast selection of independent cafes, bars and restaurants

Also within walking distance of local the open green space of Pitshanger Park

There is easy access to West Ealing station offering service into Paddington (15 minutes), Bond Street (20 minutes), Liverpool Street (26 minutes and Canary Wharf (33 minutes)



Further details:

Lets be Social:

facebook.com/VIA.Properties.Estate.Agents

instagram.com/via.properties/

twitter.com/PropertiesByVia

1. MONEY LAUNDERING REGULATIONS -

Intending purchasers and tenants will be asked to produce identification documentation at a later stage and we would ask for your co-operation in order that there will be no delay in agreeing a purchase or let

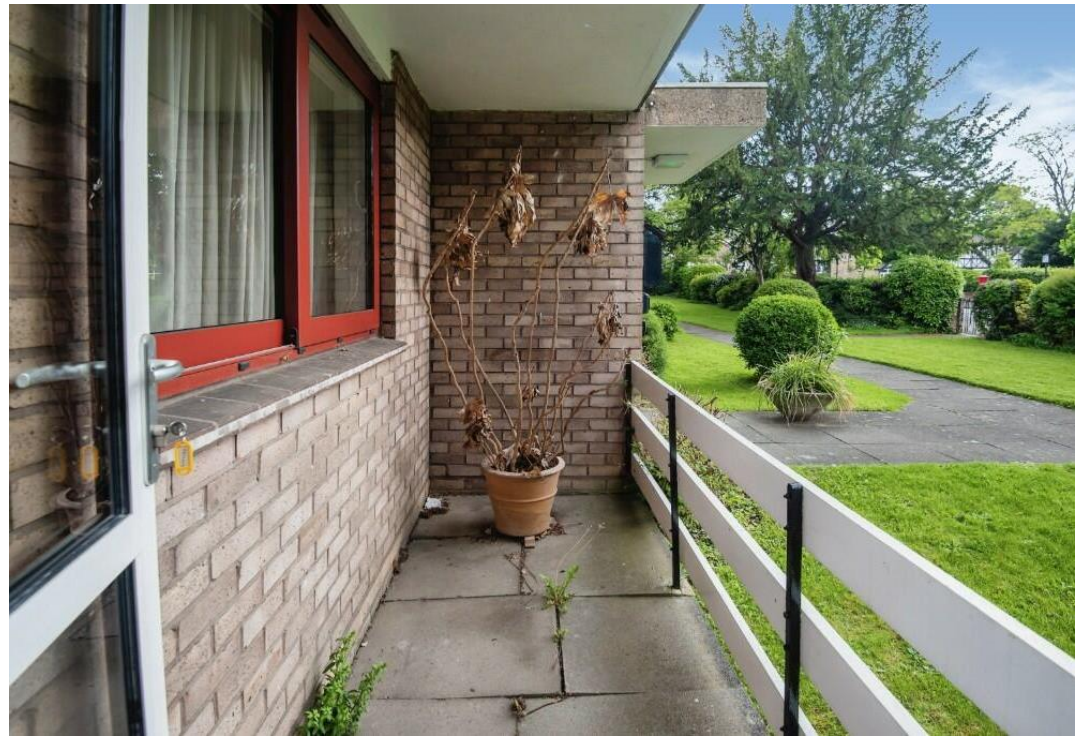
2: These particulars do not constitute part or all of an offer or contract or tenancy.

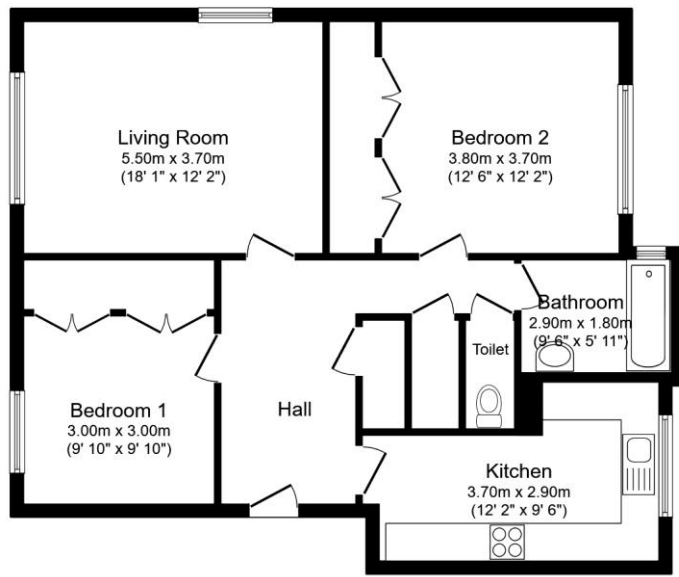
3: The measurements indicated are supplied for guidance only and as such must be considered incorrect.

4: Potential buyers and tenants are advised to recheck the measurements before committing to any expense.

5: VIA Properties Ltd have not tested any apparatus, equipment, fixtures, fittings or services and it is the buyers interests to check the working condition of any appliances.

6: VIA Properties Ltd has not sought to verify the legal title of the property and the buyers must obtain verification from their solicitor.





Total floor area 80.1 sq.m. (862 sq.ft.) approx

This floor plan is for illustrative purposes only. It is not drawn to scale. Any measurements, floor areas (including any total floor area), openings and orientation are approximate. No details are guaranteed, they cannot be relied upon for any purpose and they do not form part of any agreement. No liability is taken for any error, omission or misstatement. A party must rely upon its own inspection(s).
Powered by www.focalagent.com

VIA PROPERTIES

74 High Street, Hoddesdon, EN11
01992443399 | info@viavia.co.uk | www.viavia.co.uk

Important Notice - These particulars have been prepared in good faith and they are not intended to constitute part of an offer or contract. We have not performed a structural survey on this property and the services, appliances and specific fittings have not been tested. All photographs, measurements, floor plans and distances referred to are given as a guide and should not be relied upon.

